



**The mobile device  
that reads print aloud.**

## Product Overview

The Intel<sup>®</sup> Reader enhances independence for people with visual impairments, blindness, or reading-based learning disabilities by providing convenient and flexible access to a variety of printed materials. The Intel<sup>®</sup> Reader's unique design combines a high-resolution camera with the power of an Intel<sup>®</sup> Atom<sup>™</sup> processor that converts printed text to digital text, then reads it aloud. With the Intel Reader, people can:

- Gain more freedom with the ability to read printed materials anytime, anywhere.

- Enjoy greater flexibility, using the Intel Reader to access a wide variety of printed materials and to read and manage content in the ways that are most convenient for them.
- Gain independence, privacy and confidence by handling reading tasks for themselves, without having to wait for assistance.
- Increase productivity and achieve more with fast, efficient access to the printed information they need at work or school and in their daily lives.

## Intel Reader Features

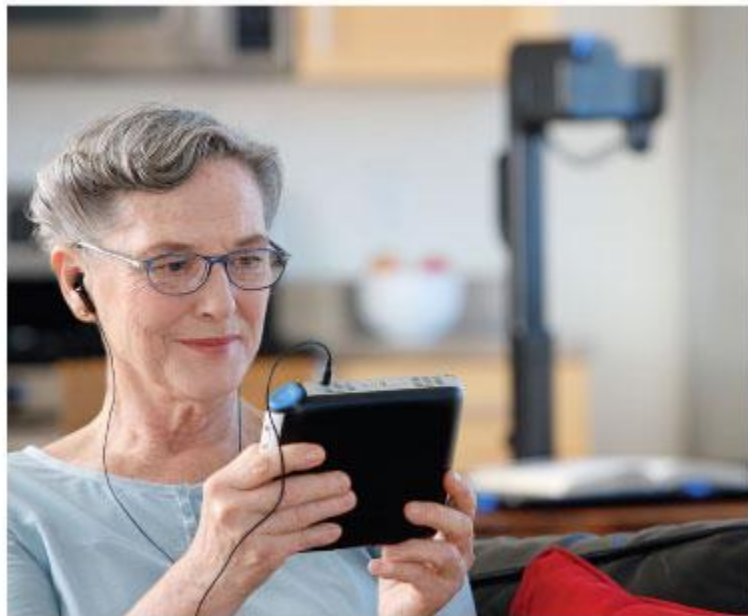
The Intel Reader gives people convenient and flexible access to a variety of printed materials. Its features include:

### Easy-to-use Design

The Intel Reader is easy to use. Simply point, shoot and listen to printed text such as schoolwork, printed work documents, magazines, mail, cookbooks and more. Easy-to-locate buttons, audio and visual navigation, and straightforward menus make it easy to locate the functions users need.

### Convenient Mobile Reading

Weighing just over a pound and about the size of a paperback book, the Intel Reader provides all the power of a bulky PC and scanner in a convenient size for work, school, home, or on the road. The Intel Reader fits easily in a purse or backpack and is ideal for reading on the go, with a sturdy magnesium case and generous battery life. Point-shoot-listen mode enables reading in a variety of locations, from work and school to shopping or travel, making it easy to read signs, product labels, concert programs, guidebooks and other text on the go, and the earphones allow private listening, clearly and discretely, without disturbing others.



### Convenient Bulk Capture for Large Documents

The Intel® Portable Capture Station is used with the Intel Reader to quickly and conveniently capture large amounts of text for school, work or pleasure. The sturdy,

portable stand enables complete, rapid text capture, holding the camera to help capture books, magazines, newspapers, and other documents. A transparent film holds books flat for easy capture, and the large, easy-to-find capture button on the base helps users quickly capture lots of pages. It folds up into a convenient briefcase size for use at home, work or school. The Intel Portable Capture Station is usually sold separately from the Intel Reader.

## Content Management Features

The Intel Reader helps people organize and access their content efficiently so they can accomplish tasks faster. The library feature lets people bookmark favorite documents for fast access. Users can navigate within a document by word, sentence, or by page, and they can go to a specific page or jump to the beginning or the end. During playback, the text is highlighted as it is read aloud, and users can have the Intel Reader pause and spell out highlighted words.



## Content and Playback Choices

The Intel Reader can store and play back a wide choice of content. The Intel Reader will play most content, including MP3, DAISY\* books and even text transferred from a PC, as well as MP3 or WAV music files. It can also generate audio versions of printed materials, such as MP3s, that can be played on most digital music players or computers. Users can play back content with lifelike voices, selecting gender, pitch, and speed to suit their personal preferences. A USB connection makes it easy to transfer files to or from a personal computer or USB drive.

## Technical Specs

### Intel® Reader

Processor	Intel® Atom Processor
LCD Display	4.3" (10.9 cm) (16:9)
Camera	5 megapixel, auto focus Focus range of 4" (10 cm) to approx. 1.1 yd (1 m)
Data Storage <sup>1</sup>	4 GB Intel® Solid State Drive (SSD), approx. 2 GB for user data. Can hold up to 600 processed pages (images and text) with up to 20 pages waiting to be processed or up to 500,000 text-only pages.
Connectivity	USB 2.0 Type A; USB 2.0 Type Mini B; AC Power; stereo audio jack
Audio Output	Integrated speakers and 1/8" (.35 mm) audio jack

Supported File Formats	DAISY 2.02 (DAISY), NISO 2002 (z2002 or DAISY 3), NISO 2005 (z2005 or DAISY 3), NIMAS 1.0/1.1, MP3, WAV, ASCII text
Battery <sup>2</sup>	Rechargeable 6-cell lithium-ion; DC7.4V, 3300mAh. Charging time approximately 150 minutes. With a fully charged battery, the Reader can: <ul style="list-style-type: none"> <li>• Play over 4 hours of text-to-speech or MP3 audio</li> <li>• Capture and process over 85 images of text</li> <li>• Remain in standby for up to 5 days</li> </ul>
Carrying Case	Helps protect Reader while allowing full camera, reading, and listening functionality. Includes shoulder strap.
Power Adapter	Input: 100-240V, 1.5A; Output: 12V, 5A, 1 lb. (.45 kg)
Dimensions	Product: 6.5" x 5.35" x 1.3" (16.5 cm x 13.6 cm x 3.3 cm) with battery Packaged: 11.5" x 7.6" x 6.5" (29.5 cm x 19.3 cm x 16.5 cm)
Weight	1.38 lbs (.63 kg) device with battery, 4.8 lbs (2.18 kg) packaged

<sup>1</sup> Estimated. User results will vary based on actual content.

<sup>2</sup> Battery operating time will vary depending on the type of content being captured or played, usage conditions such as screen and flash settings, as well as environmental factors such as temperature. As the battery ages, anticipate lower operating duration.

## Intel Digital Health Group

Intel's Digital Health Group is passionate about how technology can improve healthcare worldwide. We are committed to developing unique products to connect people and information for a better healthcare experience. Informed by nearly a decade of ethnographic studies, we share a vision with healthcare leaders of using innovative technologies to transform healthcare, improve chronic disease management, and enhance wellness and independence. Products from this group carry the Intel® Health brand. These include the mobile clinical assistant—a reference design that allow clinicians to access patient records at the point of care, the Intel® Health Guide — a system that connects care teams with their patients for personalized healthcare management at home, and the Intel Reader — a mobile device that increases independence for people who have challenges reading printed text.

For more information on the Intel Reader, visit [reader.intel.com](http://reader.intel.com)

Copyright © 2009 Intel Corporation. All rights reserved. Intel, the Intel logo, and the Intel Health logo are trademarks or registered trademarks of Intel Corporation or its subsidiaries in the United States and other countries.

\*Other names and brands may be claimed as the property of others.

Do not use the Intel® Reader as a sole means of reading safety or hazard warnings, medication labels or instructions, or financial or legal documents when a reading inconsistency or misreading of written text might put you at risk of personal injury or economic harm. For such critical reading, always use a backup means to confirm that you understand the writing, such as an alternative accessible format or another person.